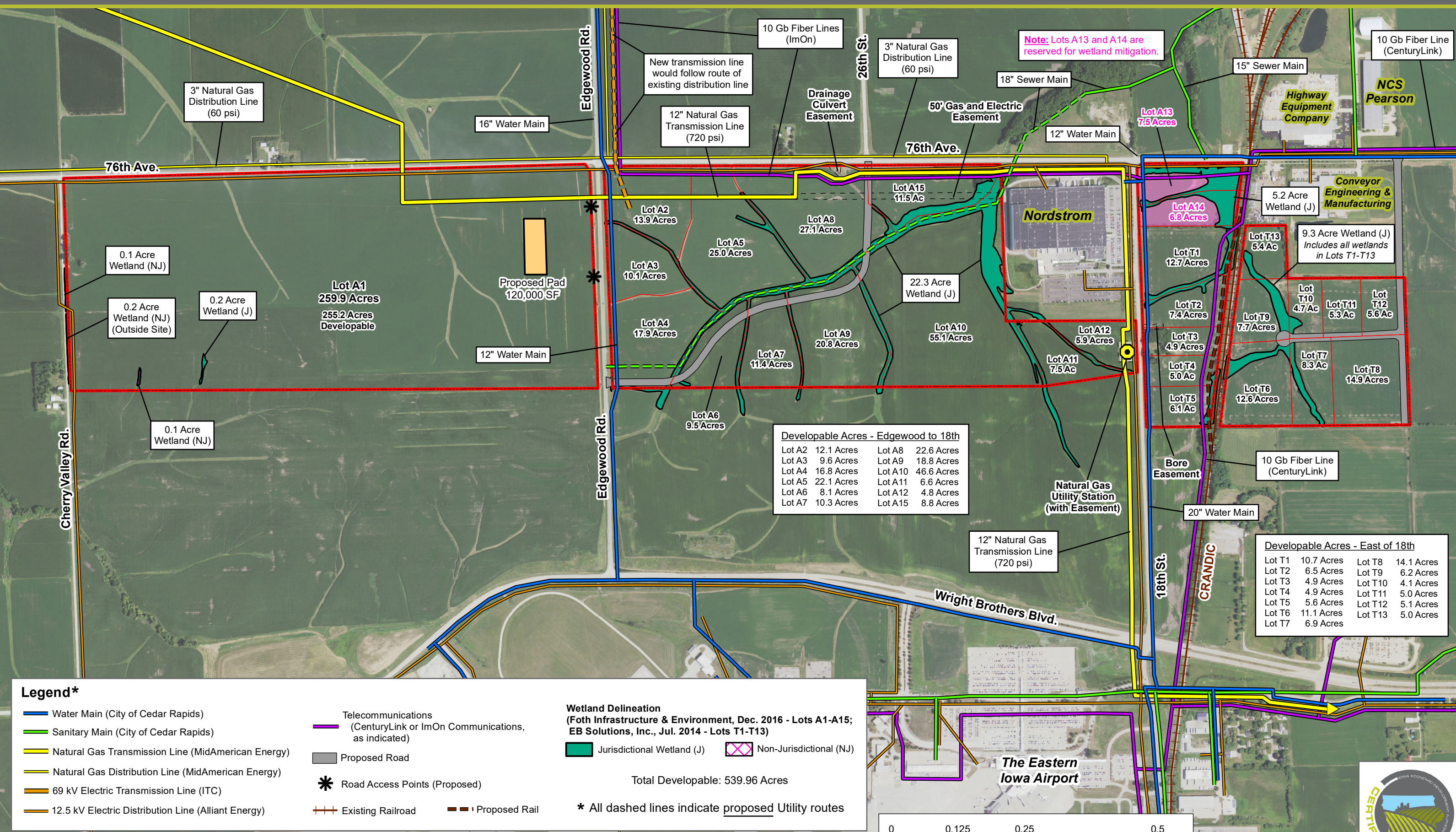


CEDAR RAPIDS LAND AND AIR SUPER PARK (590.26 ACRES)

CEDAR RAPIDS, IOWA - MASTER DEVELOPMENT PLAN



Note: Lots A13 and A14 are reserved for wetland mitigation.

Developable Acres - Edgewood to 18th

Lot A2	12.1 Acres	Lot A8	22.6 Acres
Lot A3	9.6 Acres	Lot A9	18.8 Acres
Lot A4	16.8 Acres	Lot A10	46.6 Acres
Lot A5	22.1 Acres	Lot A11	6.6 Acres
Lot A6	8.1 Acres	Lot A12	4.8 Acres
Lot A7	10.3 Acres	Lot A15	8.8 Acres

Developable Acres - East of 18th

Lot T1	10.7 Acres	Lot T8	14.1 Acres
Lot T2	6.5 Acres	Lot T9	6.2 Acres
Lot T3	4.9 Acres	Lot T10	4.1 Acres
Lot T4	4.9 Acres	Lot T11	5.0 Acres
Lot T5	5.6 Acres	Lot T12	5.1 Acres
Lot T6	11.1 Acres	Lot T13	5.0 Acres
Lot T7	6.9 Acres		

Legend*

- Water Main (City of Cedar Rapids)
- Sanitary Main (City of Cedar Rapids)
- Natural Gas Transmission Line (MidAmerican Energy)
- Natural Gas Distribution Line (MidAmerican Energy)
- 69 kV Electric Transmission Line (ITC)
- 12.5 kV Electric Distribution Line (Alliant Energy)
- Telecommunications (CenturyLink or ImOn Communications, as indicated)
- Proposed Road
- Road Access Points (Proposed)
- Existing Railroad
- Proposed Rail

Wetland Delineation
(Foth Infrastructure & Environment, Dec. 2016 - Lots A1-A15; EB Solutions, Inc., Jul. 2014 - Lots T1-T13)

- Jurisdictional Wetland (J)
- Non-Jurisdictional (NJ)

Total Developable: 539.96 Acres

* All dashed lines indicate proposed Utility routes

