

LINCOLNWAY INDUSTRIAL RAIL AND AIR PARK

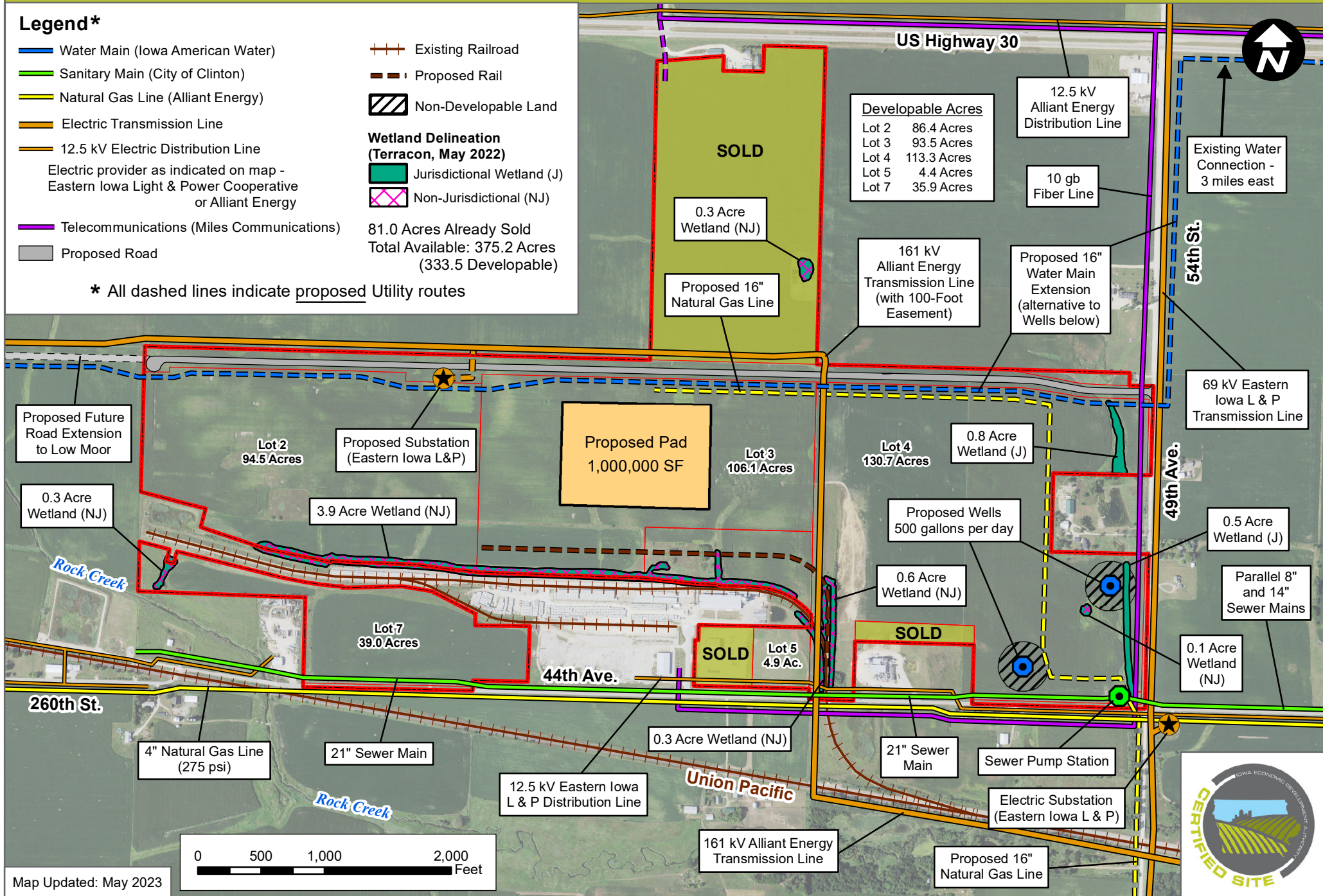
CLINTON, IOWA - MASTER DEVELOPMENT PLAN (460.73 ACRES)



Legend*

- Water Main (Iowa American Water)
 - Sanitary Main (City of Clinton)
 - Natural Gas Line (Alliant Energy)
 - Electric Transmission Line
 - 12.5 kV Electric Distribution Line
 - Telecommunications (Miles Communications)
 - Proposed Road
 - Existing Railroad
 - - - Proposed Rail
 - Non-Developable Land
- Wetland Delineation (Terracon, May 2022)**
- Jurisdictional Wetland (J)
 - Non-Jurisdictional (NJ)
- 81.0 Acres Already Sold
Total Available: 375.2 Acres (333.5 Developable)

* All dashed lines indicate proposed Utility routes



Map Updated: May 2023

