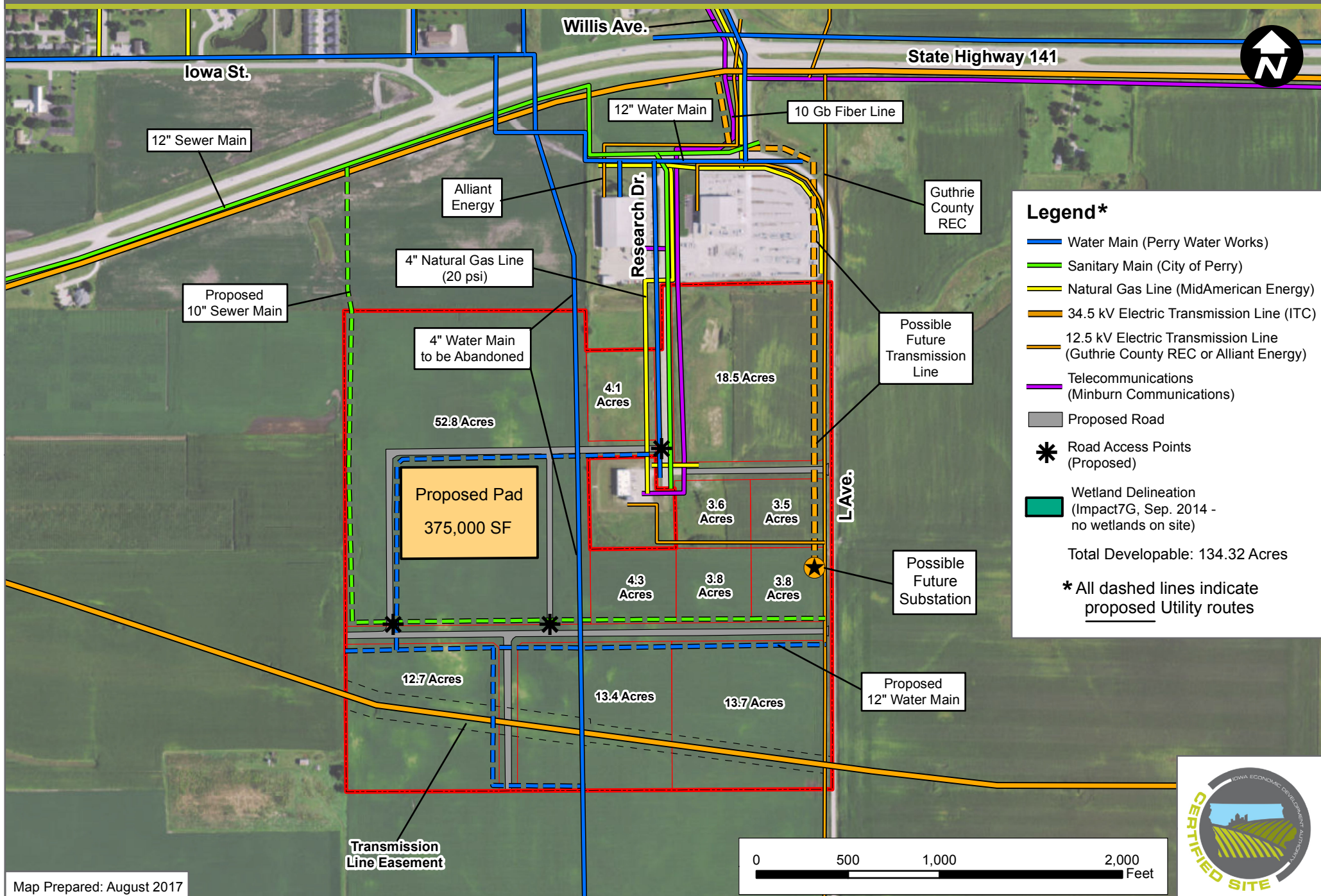


# PERRY INDUSTRIAL PARK (153.39 ACRES)

## PERRY, IOWA - MASTER DEVELOPMENT PLAN



### Legend\*

- Water Main (Perry Water Works)
- Sanitary Main (City of Perry)
- Natural Gas Line (MidAmerican Energy)
- 34.5 kV Electric Transmission Line (ITC)
- 12.5 kV Electric Transmission Line (Guthrie County REC or Alliant Energy)
- Telecommunications (Minburn Communications)
- Proposed Road
- \* Road Access Points (Proposed)
- Wetland Delineation (Impact7G, Sep. 2014 - no wetlands on site)

Total Developable: 134.32 Acres

\* All dashed lines indicate proposed Utility routes

