

**Water/Sewer Fund
Community Facilities and Services Fund**

Dan Narber

dan.narber@iowaeda.com

515.348.6214

September 5, 2023

IOWA
economic development

State of Iowa CDBG Program

» **This Year's Allocation = \$24.6 million**

» **National Objective**

- Benefit to low- and moderate-income persons 2011-2015 American Community Survey data (on IEDA website)
 - Income Survey
 - Limited clientele (presumed 51%) *Community Facilities and Services*

CDBG Overview

WATER AND SEWER FUND

Water and Sewer Fund

» **Fund Ceiling**

- All applicants are eligible to apply for \$500,000 (regardless of community size)

» **Eligible Activities**

- Water and wastewater treatment facilities
 - Expansion, rehabilitation, new construction
- Water and wastewater collection systems
 - Rehabilitation, new construction
- Water storage
- Wells
- Stormwater/sanitary sewer separation

Water and Sewer Fund

Application Cycle

- » **Quarterly application submittal dates**
 - **January 1**
 - **April 1**
 - **July 1**
 - **October 1**
 - **Must be submitted in IowaGrants by 11:59 PM**
- » **Water & Sewer Award Announcements: Mid-month in March, June, September and December**

2023 Applications

» **Water & Sewer application requirements:**

- If project needs DNR permit:
 - Sewer – Approved Facility Plan letter submitted
 - Water – Approved Preliminary Engineering Plan letter submitted
- Local match committed & documented:
 - If DNR SRF - project must be on the approved Environmental Protection Commission IUP
 - If USDA-RD - USDA letter of conditions must be submitted

» **If required attachments are not submitted with the application, the application will not be reviewed**

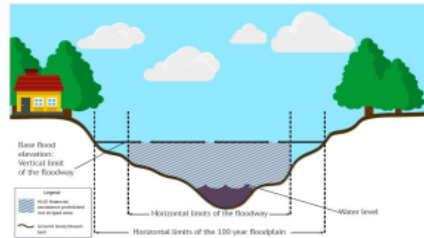
2023 Applications

- » **More competitive applications will also have (but not required):**
 - Environmental review complete
 - Final engineering complete or at least underway (if awarded, CDBG would then only reimburse construction activities)

What is a Floodway?

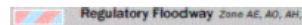
A "Regulatory Floodway" means the channel of a river or other watercourse and the adjacent land areas that must be reserved in order to discharge the base flood without cumulatively increasing the water surface elevation more than a designated height.

A floodway is more expansive than the riverbed or current water level. A floodway is typically less expansive than the area designated as Zone A or "100 year floodplain".



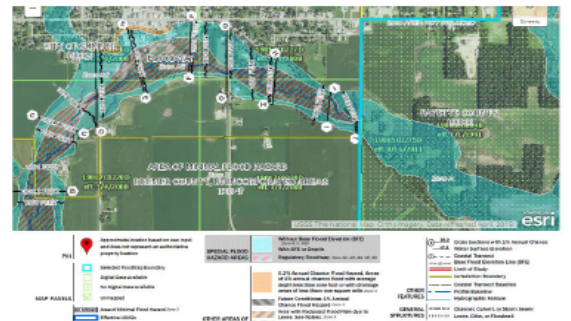
How to find a floodway on a FEMA map? Online maps can be found here: <https://msc.fema.gov/portal/home>

- On newer FEMA maps, floodways will be designated as red and blue cross hatch:



- On older FEMA maps, the area will be marked as Zone A and further investigation will need to be completed by contacting the engineer or DNR to determine the actual floodway.

The difference between older and new maps can be seen in the FEMA map below:



What does this mean to my CDBG project?

- HUD prohibits financing ANY type of structure in the floodway unless it is a functionally depended use (bridge, warf, etc) or a floodplain function restoration activity.
- In some cases, linear infrastructure is allowed if the project results in no increase in upstream flood elevations. See HUD's notice here: <https://www.hud.gov/sites/dfiles/OCHCO/documents/17-13cpdn.pdf>

WATER AND SEWER FUND – KEY POINTS

Water/Sewer – Key Points

» **Need for the Project**

- Health or safety concerns (DNR violation) or is project just an amenity

» **Timely Start and Completion**

- A/E procured, realistic construction start date and overall timetable to complete project

» **Local Funds Leveraged**

- % of project leveraged with other, and/or city funds

» **Cost Per Beneficiary**

- < \$5000 CDBG dollars / beneficiary

» **Best Long-Term Option**

- A/E and/or DNR recommendations

» **Affordability - Existing Water & Sewer Rates / Bonding Capacity**

- Most efficient use of leveraged funds

» **Readiness to proceed**

- Preliminary / final design complete, matching funds secured, capacity of recipient

Readiness Requirements

- » **Procurement of engineer prior to submittal of application**
- » **Other funding agencies commitments**
 - On EPC approved IUP
 - USDA Letter of Conditions
- » **Approved Preliminary Engineering Report letter**
- » **Approved Facility Plan letter**
- » **Copy of Construction Permit application to DNR- January 1, 2024**
- » **Environmental review complete (not required)**
- » **Final design completed or underway**

Water and Sewer Scoring Criteria

- » **Magnitude of need for the project**
- » **Degree to which project can be completed in a timely manner**
- » **Degree to which CDBG funds will be leveraged by other funds**
- » **Cost per beneficiary**
- » **Degree of impact project will have on identified need & quality of life**
- » **Readiness to proceed – emphasis on acquisition**
- » **Capacity to operate and maintain proposed project**
- » **LMI benefit**

CDBG Overview

COMMUNITY FACILITIES & SERVICES FUND

Community Facilities and Services Fund

» Fund Ceilings

- All applicants are eligible to apply for \$600,000 (regardless of community size)

» Eligible Activities

- Childcare Centers
- Facilities for persons with disabilities
- Senior Centers
- Homeless Shelters



Community Facilities and Services Fund

Application Cycle

- » **Open window process**
- » **Applications will be reviewed as submitted**
- » **Awards will be made until all funds are obligated**

Applications

» **Community Facilities & Services application requirements:**

- Site Control demonstrated by either:
 - An option on the parcel secured with money (if necessary) or
 - Ownership - as long as it is purchased prior to the application submittal date
- Local match committed & documented

» **If documentation is not submitted with the application, the application will not be reviewed**

Applications

- » **To show more “readiness to proceed”, applications can also have (but are not required):**
 - Environmental review complete
 - Final architectural plans completed or at least underway (CDBG would pay for only construction)

CDBG Overview

COMMUNITY FACILITIES & SERVICES FUND – KEY POINTS

Community Facilities & Services – Key Points

- » **Need for the Project**
- » **Timely Start and Completion**
 - Realistic construction start date and overall timetable to complete project
- » **Local Funds Leveraged**
 - % of project leveraged with other, and/or city funds
- » **Cost Per Beneficiary**
 - < \$10,000 CDBG dollars / beneficiary
- » **Capacity to Operate Facility**

Community Facilities & Services – Key Points

- » **Local Funds Committed or Secured**
- » **Site control if acquisition is necessary**
 - Option to Purchase
- » **Readiness to proceed**
 - Procurement of Architect
- » **Will Meet National Objective After Completion**
 - Certain projects may need to survey

Readiness To Proceed

- » **If planning to follow Green Streets Criteria, work with IEDA to have a project design consultation early in process and before application is submitted**
 - Contact Jeff Geerts, jeff.geerts@iowaeda.com
- » **Environmental review complete (not required)**
- » **Final architectural plans completed or at least underway**

Community Facilities & Services Review Criteria

- » **Magnitude of need for the project**
- » **Degree to which project can be completed in a timely manner**
- » **Degree to which CDBG funds will be leveraged by other funds**
- » **Cost per beneficiary**
- » **Degree of impact project will have on identified need & quality of life**
- » **Readiness to proceed**
- » **Capacity to operate and maintain proposed project**
- » **LMI benefit**
- » **Green Streets Criteria optional**

Before You Apply

PROGRAM REQUIREMENTS

Water/Sewer and CF&S Program Requirements

- » **Low- and Moderate Income Survey**
- » **Community Development and Housing Needs Assessment**
- » **Minority Impact Statement**
- » **Federal Assurance Signature Page**
- » **Applicant/Recipient Disclosure/Update Form**
- » **Public Hearing Documentation**
 - Notice, Signed Minutes and Proof of Publication or Affidavit of Posting
- » **Commitment of Local Funds**
- » **Documentation of other funding sources**
- » **Target Area Map**
- » **Incomplete applications will NOT be reviewed.**

Water/Sewer Program Requirements

» **Water/Sewer Fund**

- Procurement of engineering services documented, if seeking reimbursement
- Cost estimates
- DNR inspection reports or correspondence
- Copy of current rate ordinance for W/S utilities

» **All water & sewer applications must have procured for engineering services prior to CDBG application**

- If not, applications will be considered incomplete
- Procurement of final design also recommended prior to application

Application Reminders

- » **If an application is incomplete it will NOT be reviewed. Complete means all required documents are uploaded and include all necessary information. IEDA will not give applicants an opportunity to “fix” applications or supplement information.**
- » **Project planning should begin now. Facility Plan or Preliminary Engineering Report is required with application.**
- » **Letter of approval from IDNR for Preliminary Engineering Report or Facility Plan must be submitted with application.**
- » **Documentation of local matching funds must be included.**
- » **Copy of DNR Construction Permit application (January 1, 2024)**
- » **Water & Sewer applications will be accepted on a quarterly basis: January 1, April 1, July 1, and October 1.**

Thank You!